



SAVE \$\$\$ ON HIGH GAS/ELECTRIC BILLS!!!!

Start Saving Today on Your Electric and/or Gas Bills.

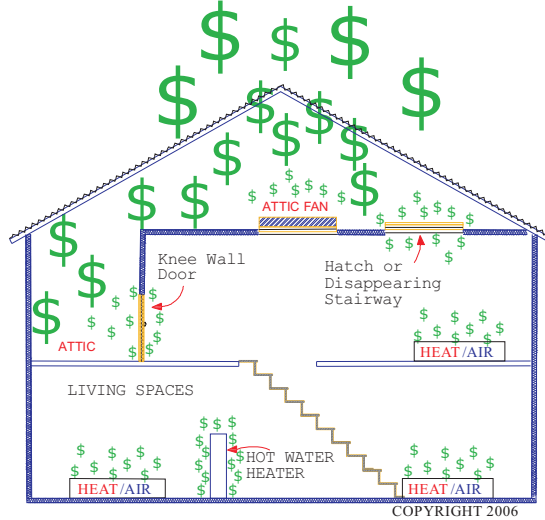
Install an Insulated Water Heater Cover

Model (ES-WHTR)

**Kit fits water heater tanks up to 60” tall and 26 inches in diameter
Includes 204 inches foil tape and 48 X 84 inches of material with 12”
extension kit. Fits gas & electric heaters**



ARE YOU WASTING MONEY?



Short Payback \$\$\$

U. S. Department of Energy

Water heating can account for 14 - 25% of the energy consumed in your home.¹

Save 4-9% water heating costs by insulating your hot water heater to prevent standby losses.²

(Green Product) Safe for the environment--Material is manufactured of aluminum foil and polyethylene foam.

Effective R-Value 9.6 Vertical Installation

97% Radiant Heat Reflective

**Class A/Class 1 Fire Rated N.F.P.A. Passed E 84 & 286 Tests
Passed California State Conducted Fire Test
Quick Easy Installation.**

¹http://www.eere.energy.gov/consumer/your_home/water_heating/index.cfm/mytopic=12760

²http://www.eere.energy.gov/consumer/your_home/water_heating/index.cfm/mytopic=13070

Instructions for installing an Insulation Blanket on an Electric or Gas Storage Water Heater

TOOLS REQUIRED:

Pair of scissors or utility knife

Materials List

(1) pc. 48" X 84" piece radiant barrier insulation

(1) pc. 12" X 84" piece radiant barrier insulation

(1) pc. 26" X 26" piece radiant barrier insulation

(1) Foil tape 204 inches length

(1) Reusable consumer information access label

Cut the tank top insulation to fit around the piping in the top of the tank. If the water heater has these pipes located on the side, then place the top cover over the top without cutting and tape the corners down with four-inch foil tape strips as shown in the figure one in step 2. If necessary, tape the cut section(s) closed after the top has been installed with short strips of the foil tape provided.

NOTE: DO NOT INSTALL THE INSULATING TOP ON A GAS WATER HEATER. THIS MAY CREATE A FIRE HAZARD IF THE COVER IS PLACED NEXT TO THE HOT EXHAUST VENT IN THE TOP OF THE UNIT. IF YOU HAVE A GAS HEATER PROCEED TO STEP FOUR—Gas Installation Guide.

1. Fold the corners of the tank top insulation down and tape to the sides of the tank.

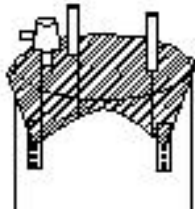
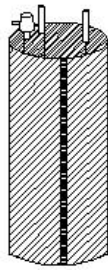


Fig. 1

2. **Electric Installation Guide: Refer to Fig. 2**

Position the insulating blanket around the circumference of the tank. If your water heater tank is taller than 48 inches, add the additional 12-inch piece of insulation included to increase the height of the blanket to match the size of your tank height. You can attach the extra piece to the 48-inch section of the blanket with part of the foil tape provided. For ease of installation, position the blanket so that the ends do not meet over the service access panels in the side of the tank. Some tanks may have one or two service access panels.

If your water heater has the temperature/pressure relief valve and the overflow pipe on the side of the tank instead of on the top, install the blanket so these items are located outside of the blanket. Depending on the piping arrangement and location, you may need to cut the blanket.



Electric Heater Fig. 2

3. Make an X-shaped cut from corner to corner in the insulating blanket located over the service access covers on the electric water heater. You may leave these triangular flaps in place to help insulate the tank. If there is a warning label to consumers about storing flammable materials around the water heater, measure from the top of the heater to the center of warning label and mark a spot on top of the heater for reference during installation. Measure the size of warning label to use as a guide after initial installation of the water heater blanket. After the blanket is installed, use the reference spot you marked on the top of the water heater to determine where to cut the X shape flaps for access to the informational label. After cutting the X shaped opening in the insulation, place the consumer information label provided over the flaps to keep the flaps closed for insulation purposes.

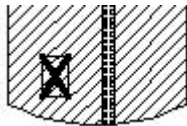
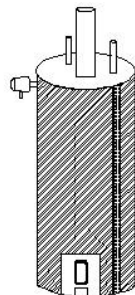


Fig. 3

Your plumber or electrician can open these flaps for service when needed by folding the flaps back and applying a piece of tape to hold them in place during service or tucking them under the blanket during service.



Gas Heater Fig. 4

Gas Installation Guide: Refer to Fig. 4

4. Position the insulating blanket around the circumference of the tank. If your water heater tank is taller than 48 inches, add the additional 12-inch piece of insulation included to increase the height of the blanket to match the size of your tank height. You can attach the extra piece to the 48-inch section of the blanket with part of the foil tape provided. Do not cover up the gas controls, burner assembly, or consumer warning labels. Allow at least twelve (12) inches clearance around the main gas controls and burner assembly. If there is a warning label to consumers about storing flammable materials around the water heater, measure from the top of the heater to the center of warning label and mark a spot on top of the heater for reference during installation. Measure the size of warning label to use as a guide after initial installation of the water heater blanket. After the blanket is installed, use the reference spot you marked on the top of the water heater to determine where to cut the X shape flaps for access to the informational label. After cutting the X shaped opening in the insulation, place the consumer information label provided over the flaps to keep the flaps closed for insulation purposes.

Make sure the airflow to the burner is not obstructed. Leave the thermostat uncovered, and never insulate the top of a gas water heater tank.

Overlap the insulating blanket if it is longer than the circumference of your tank. Secure the blanket in place with the foil tape provided on the cover by removing the paper backing on the foil tape and applying the tape to join both sides of the insulation blanket.

NOTE: Only qualified professionals should install this unit. If in doubt about using a thermal blanket on your water heater, please consult with the water heater manufacturer prior to installing the thermal blanket to determine if your water heater should be insulated and the proper method to install the blanket. PES will not be liable for any damages consequential or otherwise arising from improper installation of the thermal blanket or failure of the water heater due to poor maintenance or other causes resulting in consequential damages. Caution: Aluminum is an Electrical Conductor. Please use caution when working around electrical sources including overhead power lines.